



Overview of the HRSA/Bureau of Health Workforce (BHW) Programs

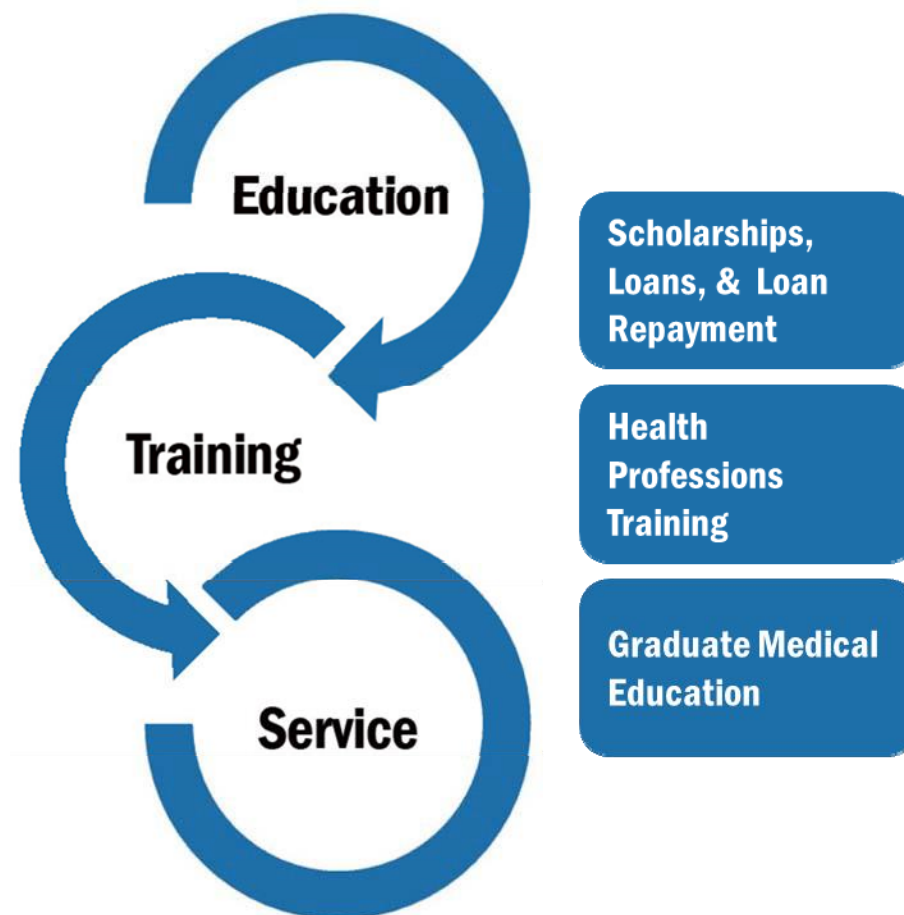
August 2, 2017

**Presented by Camille Soondar, Regional Supervisor
Division of Regional Operations (DRO)
Philadelphia Regional Office (Reg 3-PA, DE, WV, DC, MD, VA)
Bureau of Health Workforce
Health Resources and Services Administration
Phone: (215) 861-4338
E-Mail: csoondar@hrsa.gov**



Bureau of Health Workforce (BHW) Approach

From education and training to service, BHW will make a positive and sustained impact on health care delivery for underserved communities.



Mission of the BHW

The Bureau of Health Workforce (BHW) improves the health of underserved and vulnerable populations by strengthening the health workforce and connecting skilled professionals to communities in need. We accomplish this by focusing on three priorities:

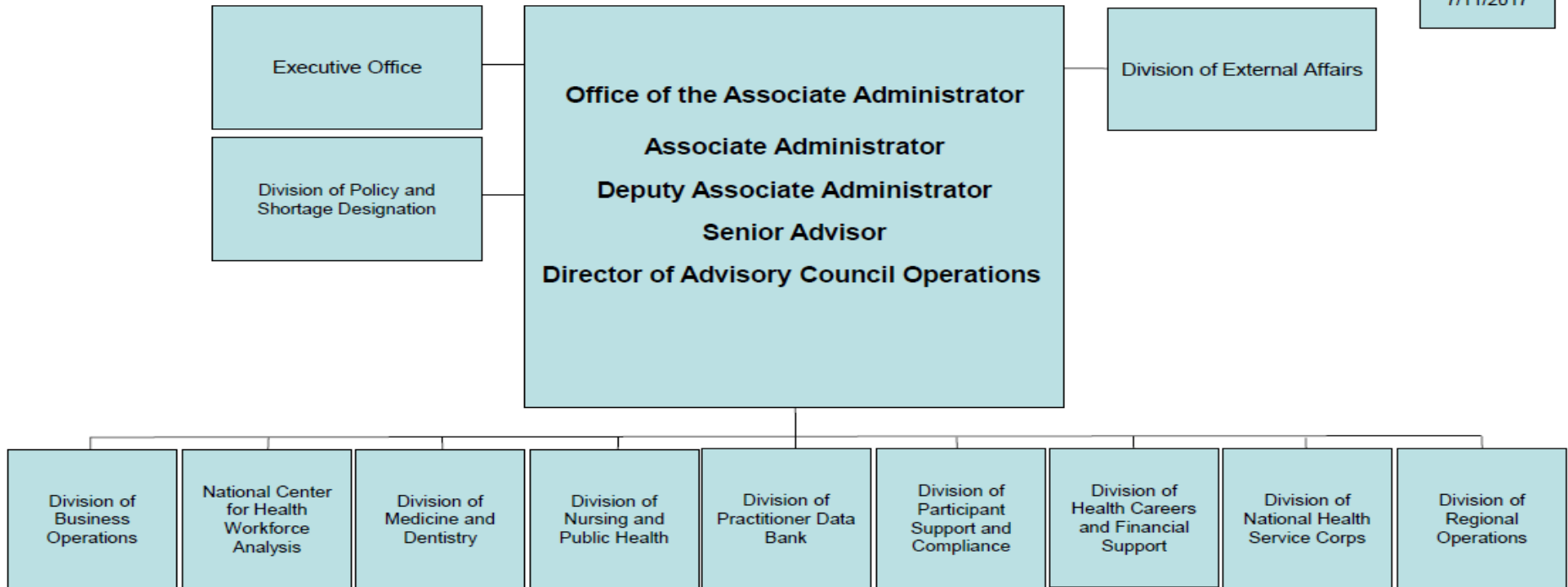
- Preparing a workforce that increases the number of diverse, culturally competent primary care providers representing various disciplines;
- Improving workforce distribution throughout the nation, particularly in underserved, rural, and tribal areas; and
- Advancing modern health care – advancing changes in health professions training that are responsive to the evolving needs of the health care system.



BHW Organization

Bureau of Health Workforce

7/11/2017



Divisions within the BHW: DRO

The Division of Regional Operations (DRO), located within 10 regional offices, supports the HRSA Bureau of Health Workforce (BHW) through:

- ❖ *NHSC site visits and technical assistance to sites;*
- ❖ *NHSC site applications and re-certification reviews;*
- ❖ *Participant recruitment and retention;*
- ❖ *Scholar placement at NHSC approved sites;*
- ❖ *Building partnerships and collaborations with local, State, National and Federal stakeholders.*
- ❖ <https://nhsc.hrsa.gov/sites/index.html>
- ❖ <https://nhsc.hrsa.gov/downloads/sitereference.pdf>



Divisions within the BHW: DNPH

The Division of Nursing and Public Health (DNPH), located in Rockville, MD, supports the HRSA Bureau of Health Workforce (BHW) through:

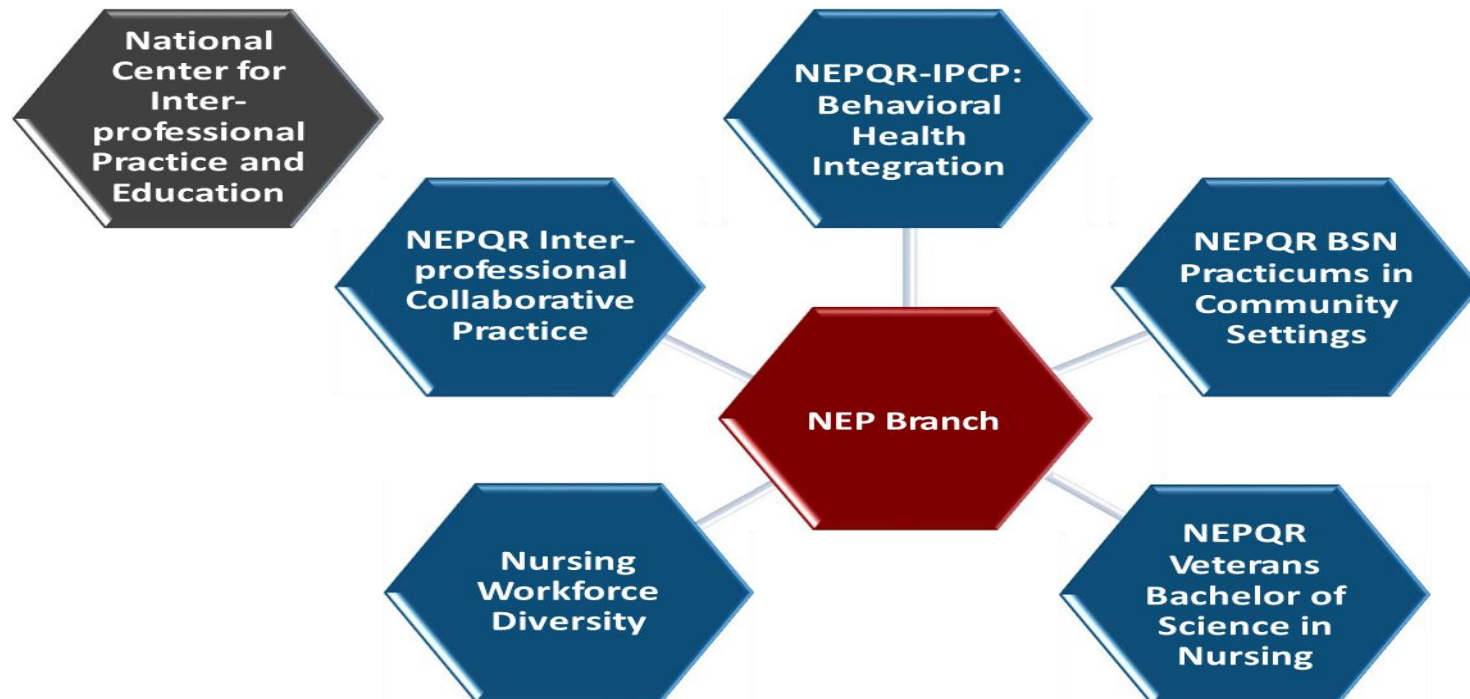
- ❖ *Nursing grants and cooperative agreements, which support nursing education and practice; and*
- ❖ *Public Health Workforce and Development grants and cooperative agreements, to increase the number, quality, and ability of individuals in the public health workforce to meet national, state, and local health care needs.*

<https://bhw.hrsa.gov/grants>



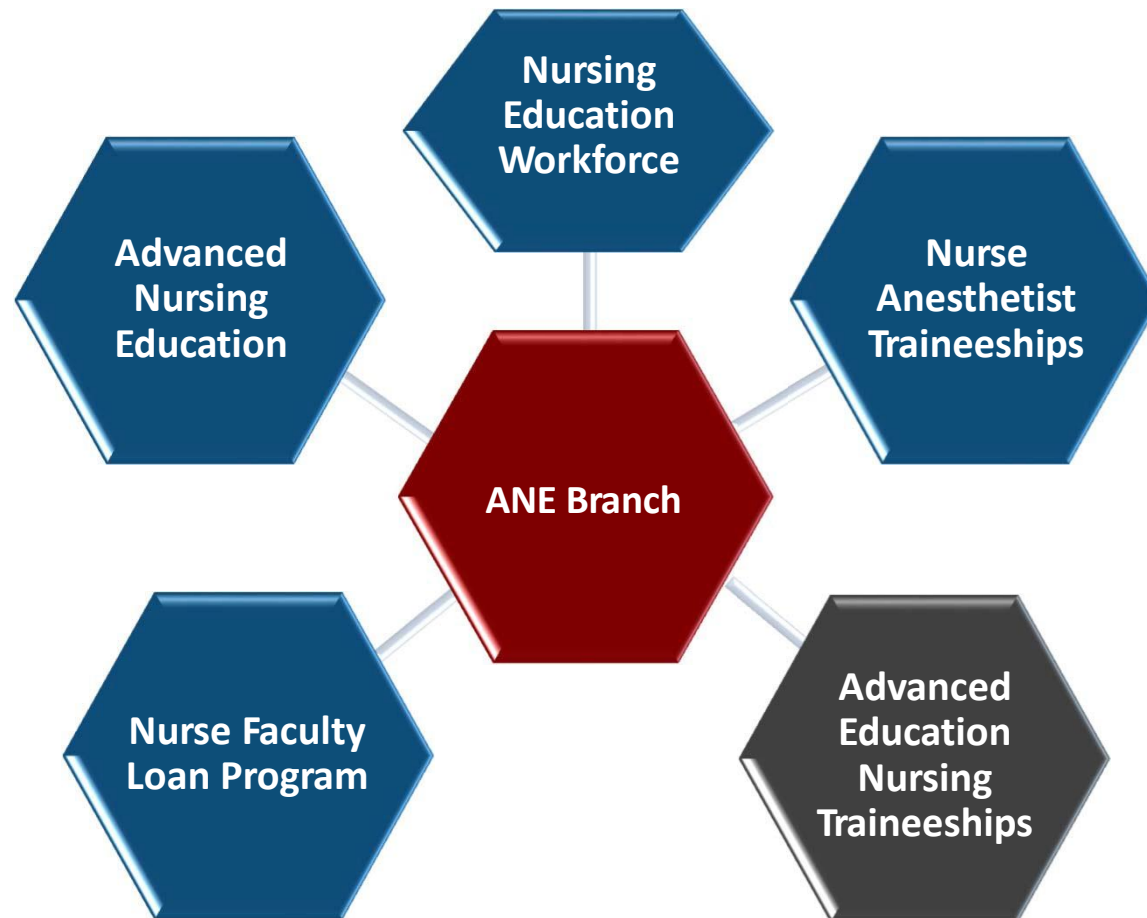
BHW/DNPH-Nursing Education and Practice Branch

Nursing Education and Practice Branch (NEP) – whose portfolio includes:



BHW/DNPH-Advanced Nursing Education Branch

Advanced Nursing Education (ANE) – whose portfolio includes:



Divisions within the BHW: DHCFS

The Division of Health Careers and Financial Support (DHCFS), located in Rockville, MD, supports the HRSA Bureau of Health Workforce (BHW) through:

- ❖ *Programs that provide education and training opportunities to individuals from disadvantaged backgrounds, in order to:*
 - ❖ *Increase access to care for underserved populations; and*
 - ❖ *Increase opportunities for minority patients to see practitioners with whom they share a common race, ethnicity or language.*
- ❖ <https://bhw.hrsa.gov/grants>
- ❖ <https://bhw.hrsa.gov/loansscholarships/schoolbasedloans>
- ❖ <https://bhw.hrsa.gov/loansscholarships/nursecorps>



BHW/DHCFS NURSE Corps Statistics

As of FY 2016, 17% of NURSE Corps participants were serving in rural areas and 83% of NURSE Corps participants were serving in urban areas.

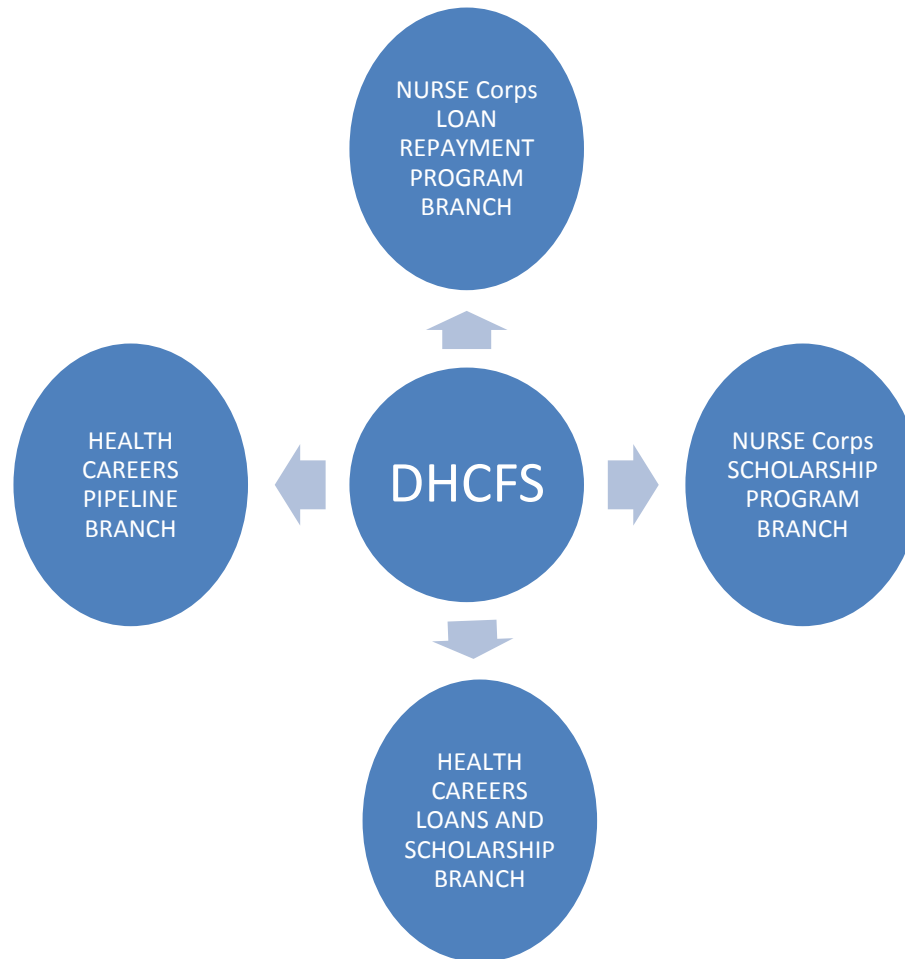
As of FY 2016, there are 1,695 NURSE Corps participants (excludes NURSE Corps Faculty) serving over 1.7 million patients at 1,080 Critical Shortage Facilities. Approximately, 80% are working in communities with Health Professional Shortage Areas with scores greater than 14.

NURSE Corps: Minorities represent approximately 29.7% of the FY 2016 NURSE Corps field strength and more than 40% of the FY 2016 NURSE Corps pipeline.

- African American nurses represented 16% of the NURSE Corps, exceeding their 12.2% share in the national nursing workforce.
- African American, American Indian or Alaska Native, and Hispanic NC participants also surpass national Nurse Faculty averages.
- Among scholars, 25.8% are African American, 12% are Hispanic, 8.5% are Asian or Pacific Islander, and 1.7% are American Indian or Alaska Native.



BHW/DHCFS Branches



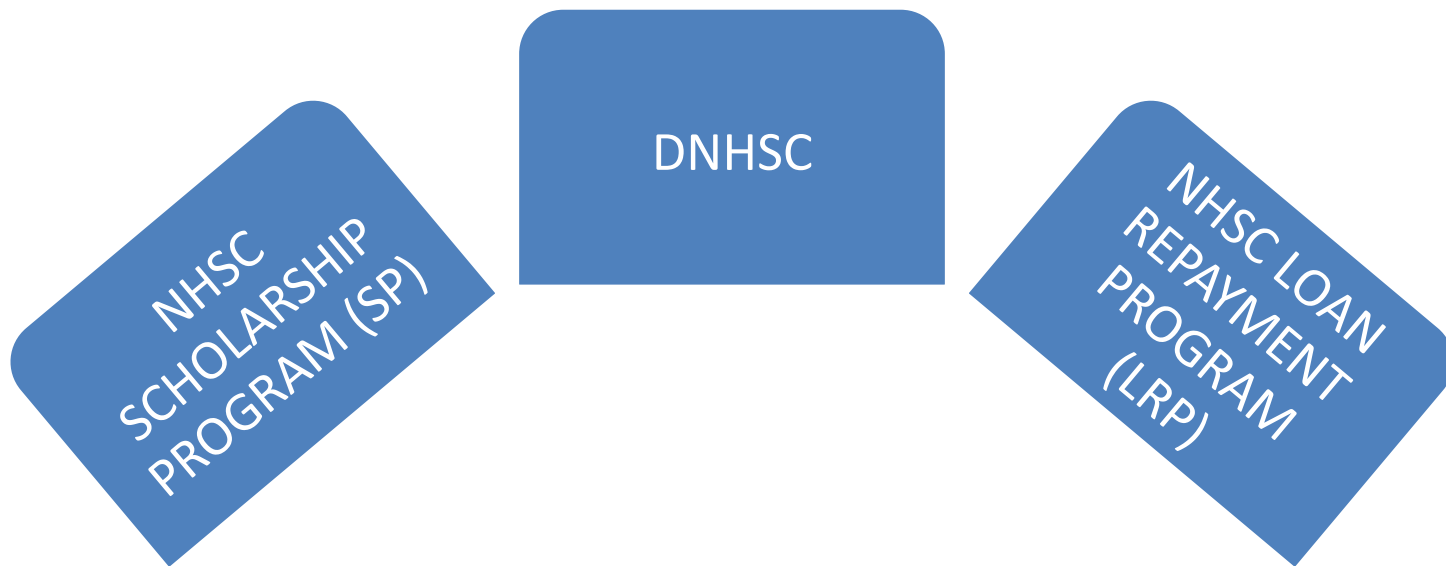
Divisions within the BHW: DNHSC

The Division of National Health Service Corps (DNHSC), located in Rockville, MD, supports the HRSA Bureau of Health Workforce (BHW) through:

- ❖ *Providing scholarship and loan repayment programs to help underserved communities recruit and retain primary health care providers.*
- ❖ *These programs include:*
 - ❖ *NHSC Scholarship Programs (SP) which provides Scholarships for primary care medical and dental providers-in-training; and*
 - ❖ *NHSC Loan Repayment Programs (LRP) which provides Loan Repayment for primary care medical, dental, and mental and behavioral health clinicians.*
- ❖ <https://bhw.hrsa.gov/loansscholarships/nhsc>



BHW/DNHSC Branches



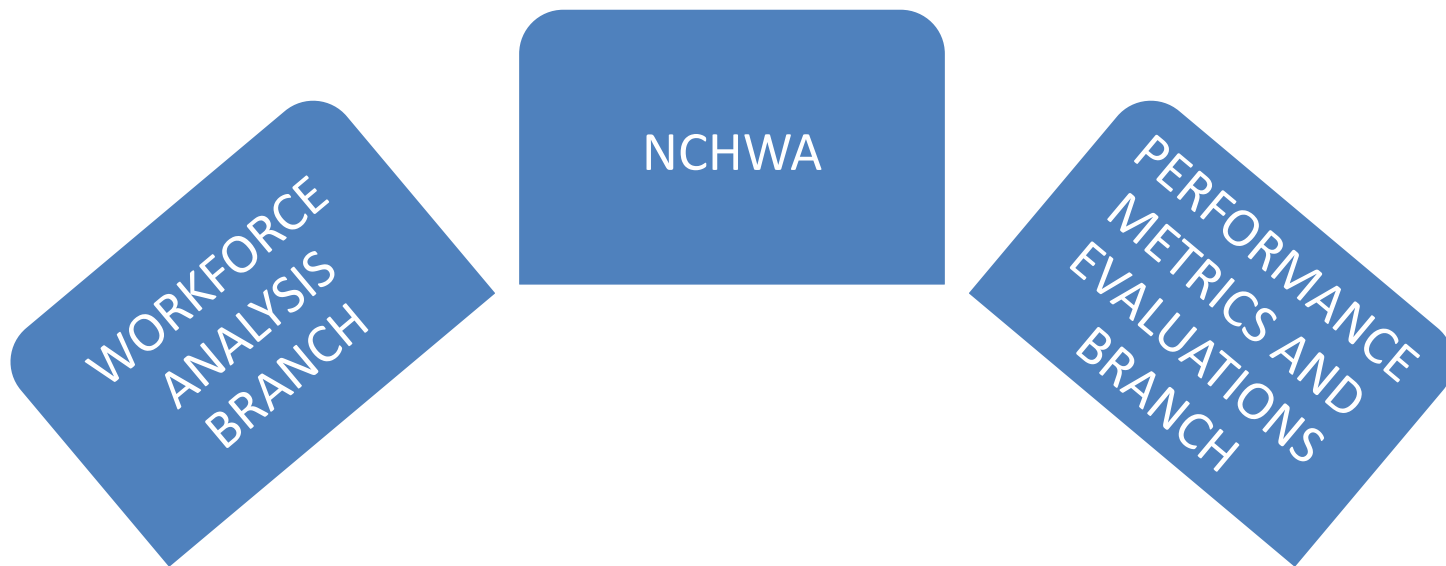
BHW/National Center for Health Workforce Analysis (NCHWA)

The National Center for Health Workforce Analysis (NCHWA), located in Rockville, MD, supports the HRSA Bureau of Health Workforce (BHW) through:

- ❖ Research by:
 - ❖ *Examining issues impacting supply, demand, distribution, and education of the nation's health workforce; and*
 - ❖ *Providing policymakers with the information necessary to make decisions.*
 - ❖ <https://bhw.hrsa.gov/national-center-health-workforce-analysis>



BHW/NCHWA Branches



BHW/Health Workforce Connector

- ❖ Free online recruitment resource where all NHSC- approved sites can post medical, dental, and mental and behavioral health job vacancies.
- ❖ <https://connector.hrsa.gov/>

The screenshot displays the HRSA Health Workforce Connector interface. At the top, there is a search bar with the text 'Raleigh, NC, United States' and a 'Go!' button. Below the search bar, the page is divided into several sections:

- Keyword:** A search input field with the placeholder text 'Job Title, Discipline, or Site Nat'.
- Location:** A dropdown menu showing 'Raleigh, NC, United States'.
- Advanced Search:** A section with a 'Clear' button and various filters: 'Distance' (set to 10 miles), 'Site Name' (empty), and 'Site Type' (set to 'Select all that apply...').
- Additional Filters:** A section with three radio buttons: 'Show Sites and Opportunities' (selected), 'Show Opportunities', and 'Show Sites'.
- Search Results (463):** A table listing search results. The first four results are for 'Physician, MD/DO' positions at 'Advance Community Health - Southeast Raleigh'. The fifth result is for a 'Nurse Prac. OR Phy. Assistant' position at 'Angier Medical Center'. The sixth result is for a 'Physician, MD/DO' position at 'Angier Medical Center'.
- Map:** A map of the United States with a red pin indicating the location of Raleigh, NC.



HRSA Advisory Councils

Five councils advise HRSA on health professions policies and programs:

- ❖ Advisory Committee on Interdisciplinary, Community-Based Linkages (ACICBL)
- ❖ Advisory Committee on Training in Primary Care Medicine and Dentistry (ACTPCMD)
- ❖ Council on Graduate Medical Education (COGME)
- ❖ National Advisory Council on Nursing Education and Practice (NACNEP)
- ❖ National Advisory Council on the National Health Service Corps (NACNHSC)

HRSA accepts council nominations on a continuous basis to be considered as vacancies.

Submit nominations to the Advisory Council Operations
Team at HWAdvisoryCouncilFRN@hrsa.gov.



Questions



Connect With Us

Web: bhw.hrsa.gov

Health Workforce Customer Care Center

For information and assistance with the National Health Service Corps, Nurse Corps and Faculty Loan Repayment Program, please fill out the [contact form](#) or call 1-800-221-9393 (TTY: 1-877-897-9910), 8 a.m. to 8 p.m. ET, weekdays (except Federal holidays).

- ❖ **Health Workforce Connector:** <https://connector.hrsa.gov/>
- ❖ **Workforce Connections newsletter:** www.hrsa.gov/subscribe
- ❖ **LinkedIn:**
 - ❖ www.linkedin.com/company/national-health-service-corps
 - ❖ www.linkedin.com/company/nurse-corps
- ❖ **Twitter:**
 - ❖ twitter.com/HRSAgov
 - ❖ twitter.com/NHSCorps
- ❖ **Facebook:**
 - ❖ facebook.com/HHS.HRSA
 - ❖ facebook.com/nationalhealthservicecorps
 - ❖ facebook.com/HRSANURSECorps

