

BRIDGING HEALTH EQUITY ACROSS STATE LINES AND COMMUNITIES

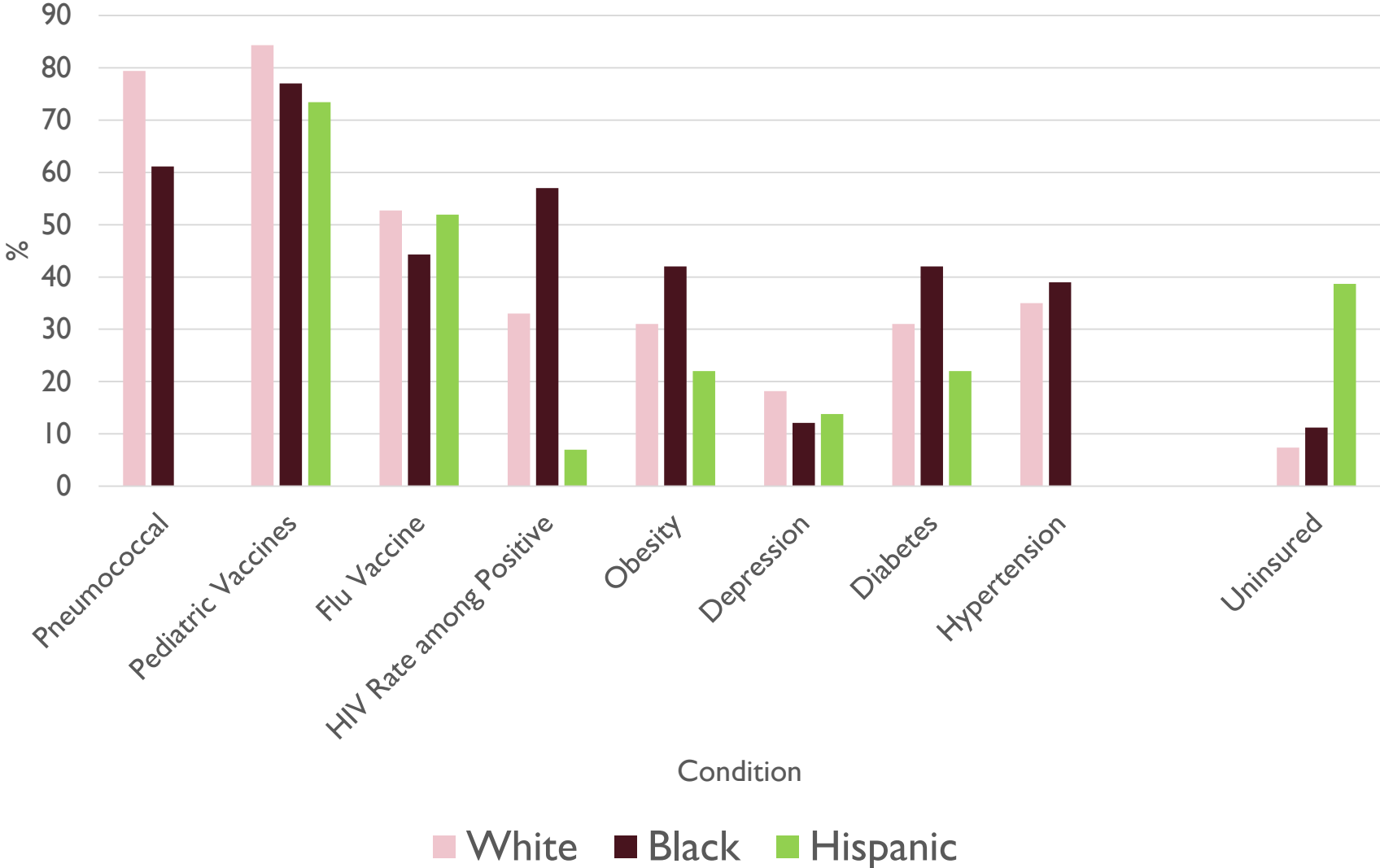


STATE OFFICE OF MINORITY HEALTH MEETING

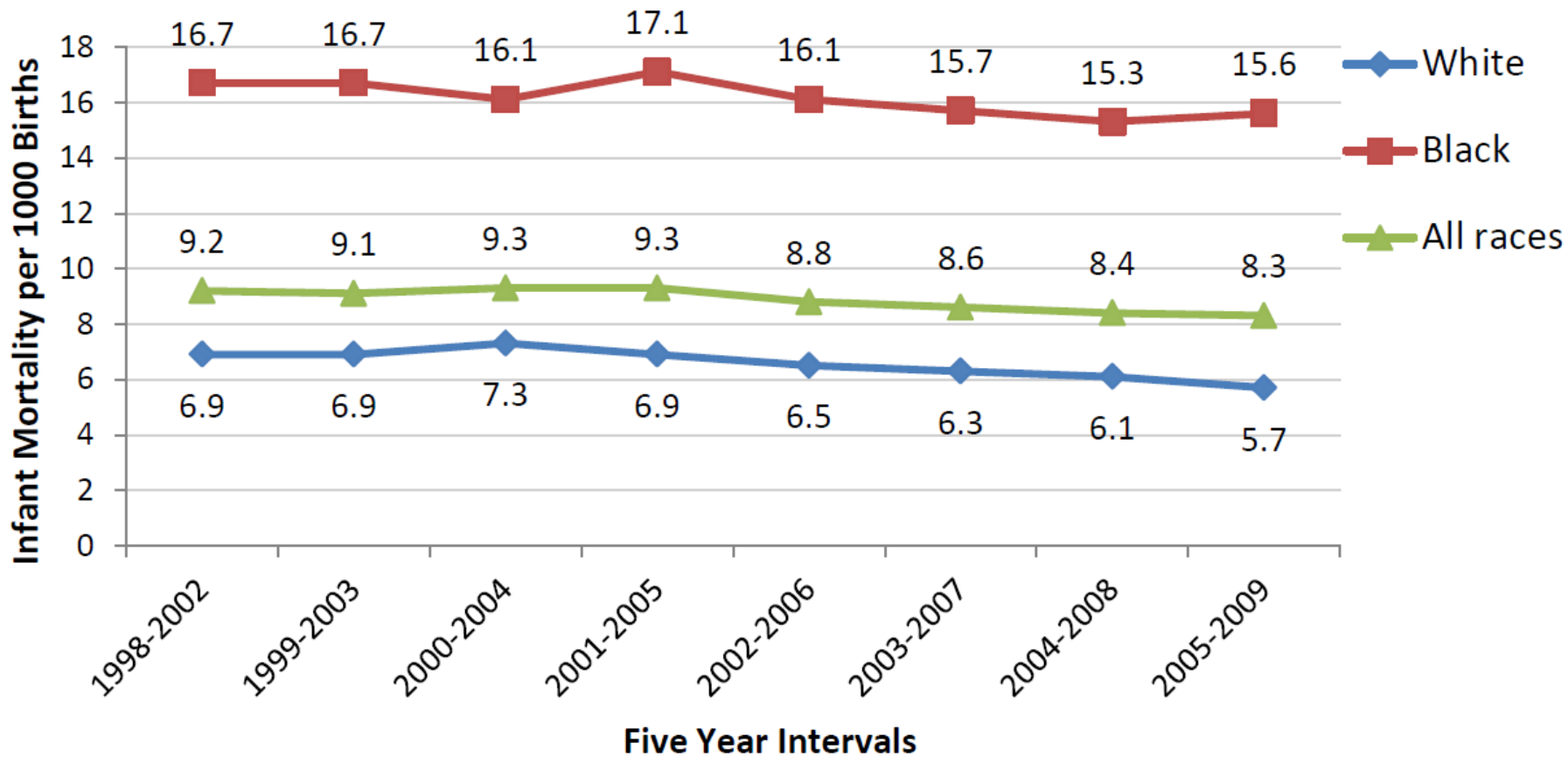
AUGUST 2ND, 2017

Lucy Luta MD, MPH
Health Equity Bureau Chief
Division of Public Health
Department of Health and Social Services

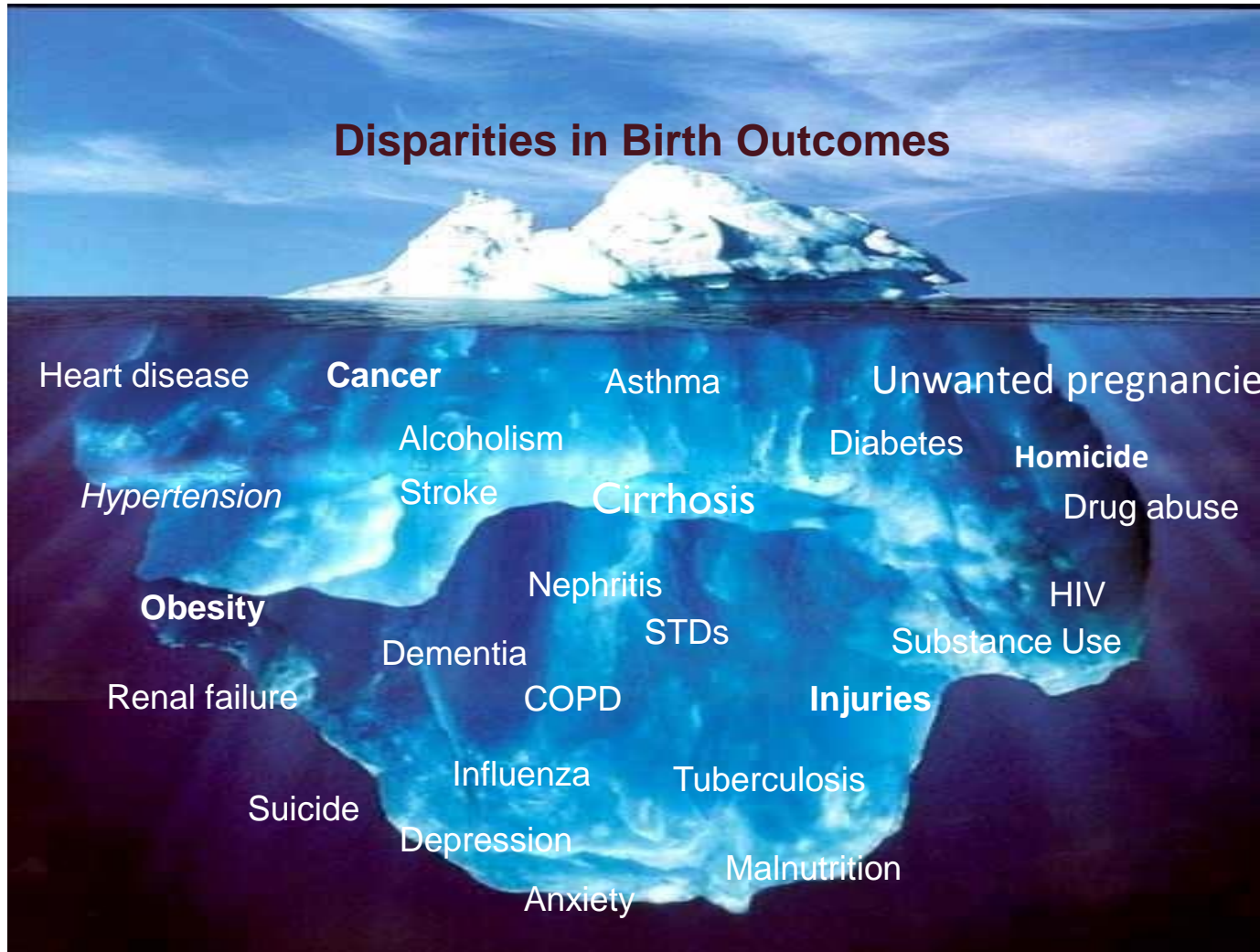
Health Disparities in Delaware



**Delaware Five-Year Average Infant Mortality Rates,
by Race, 1998-2009**

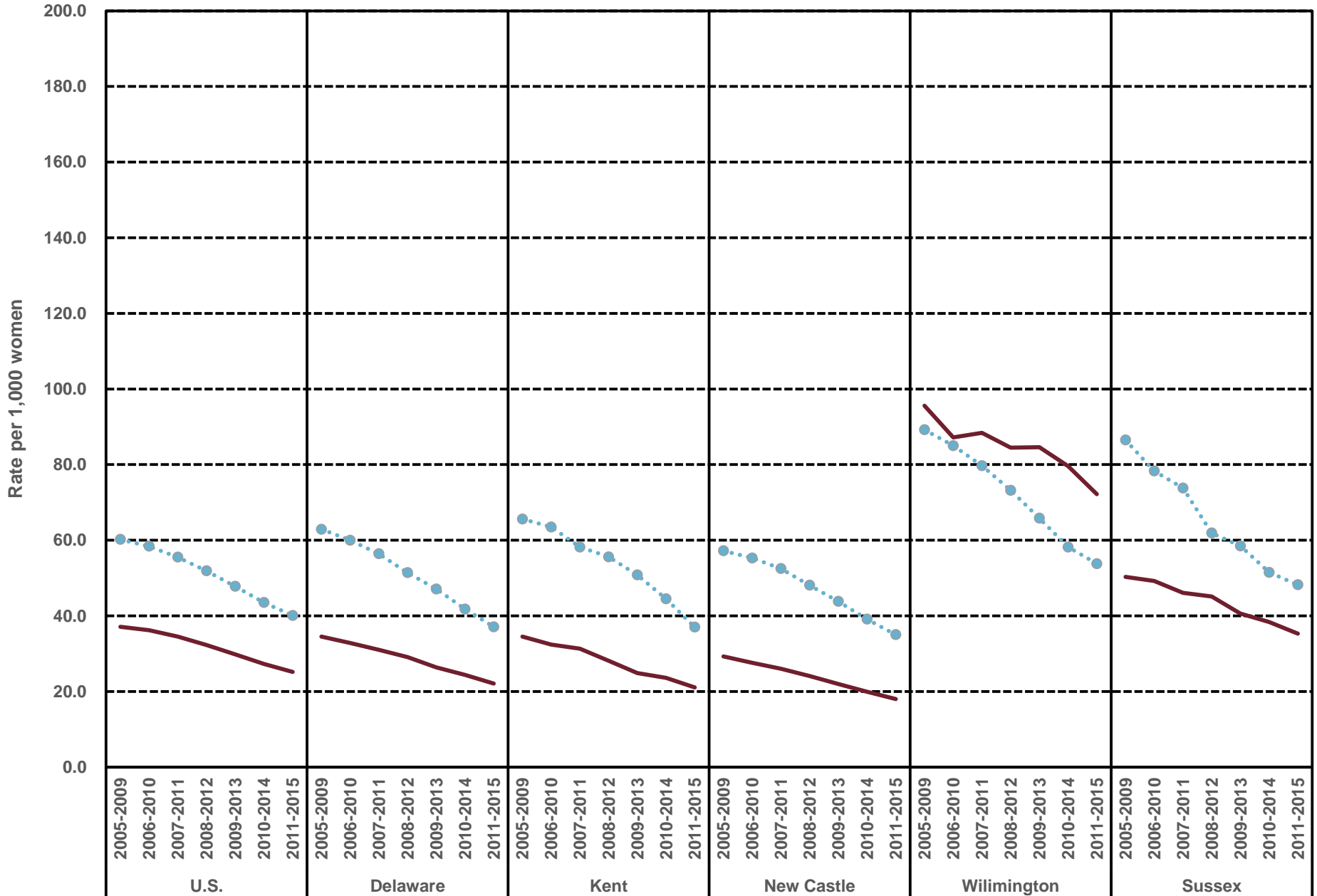


Disparities in Birth Outcomes are the tip of the health disparities iceberg

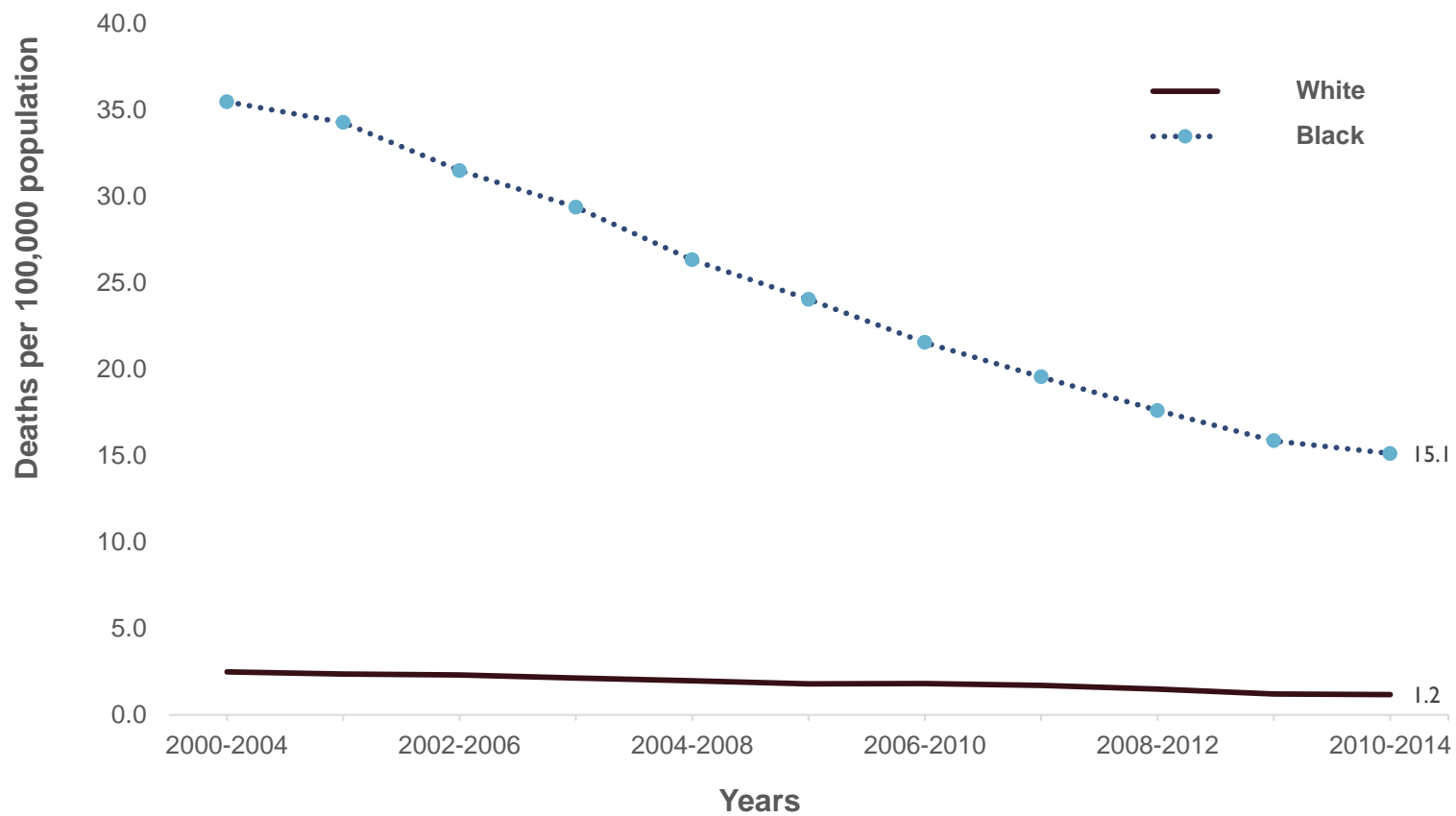


Five-year Teen birth rates, 15-19 years, by race, Delaware, 2005-2015

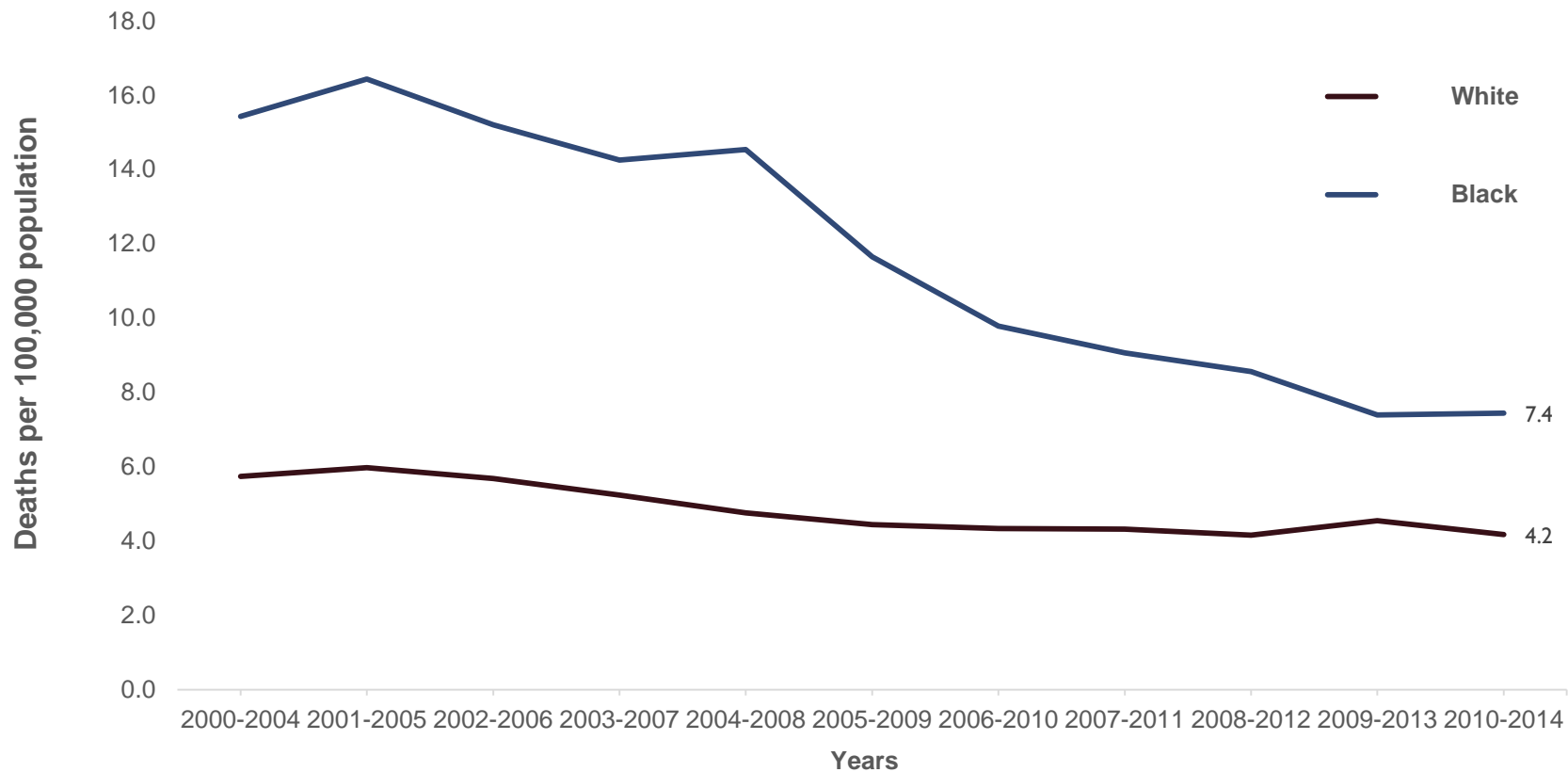
— White ···· Black



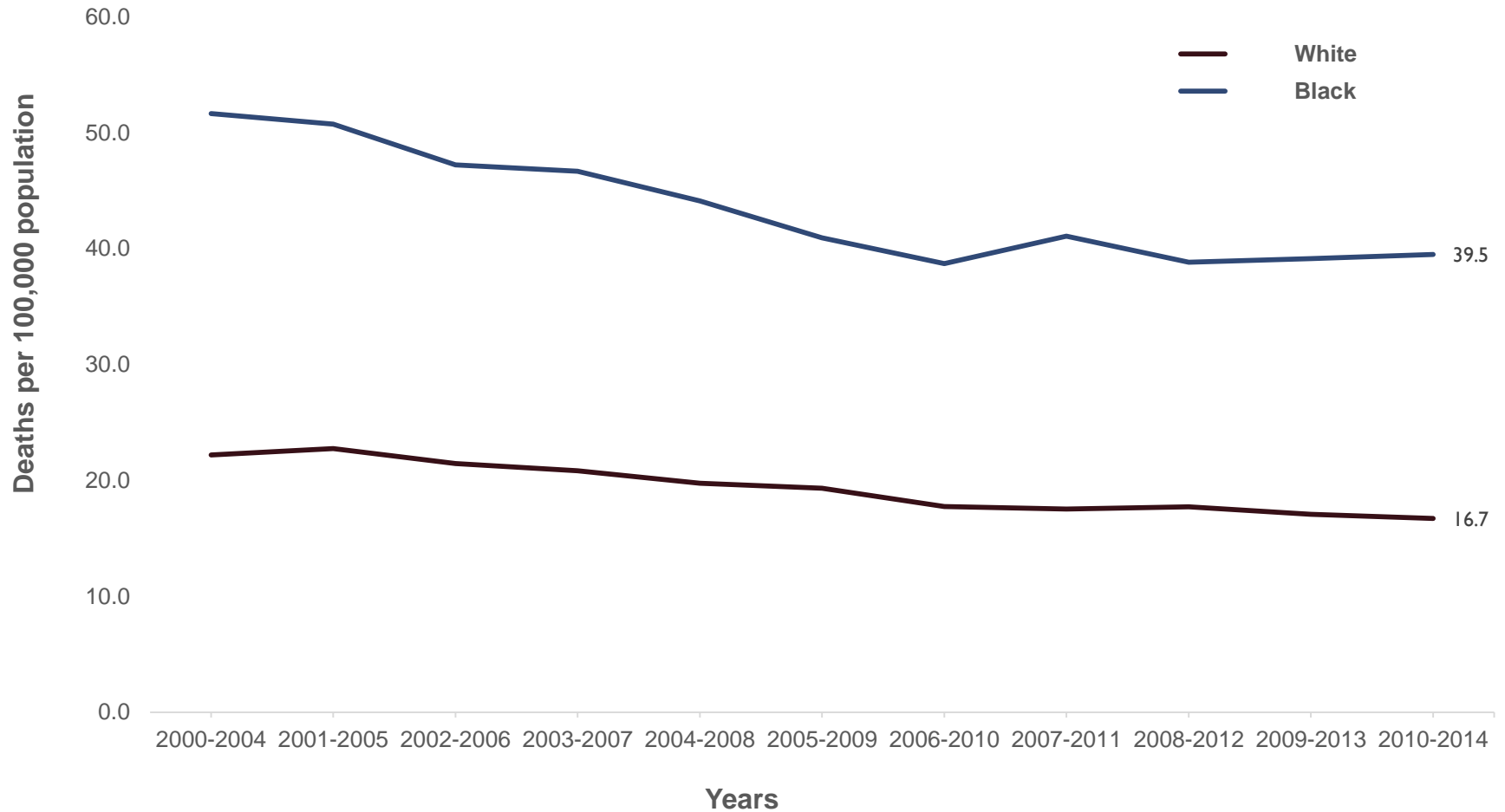
Five-year Age-adjusted HIV Mortality Rates by Race, Delaware 2000-2014



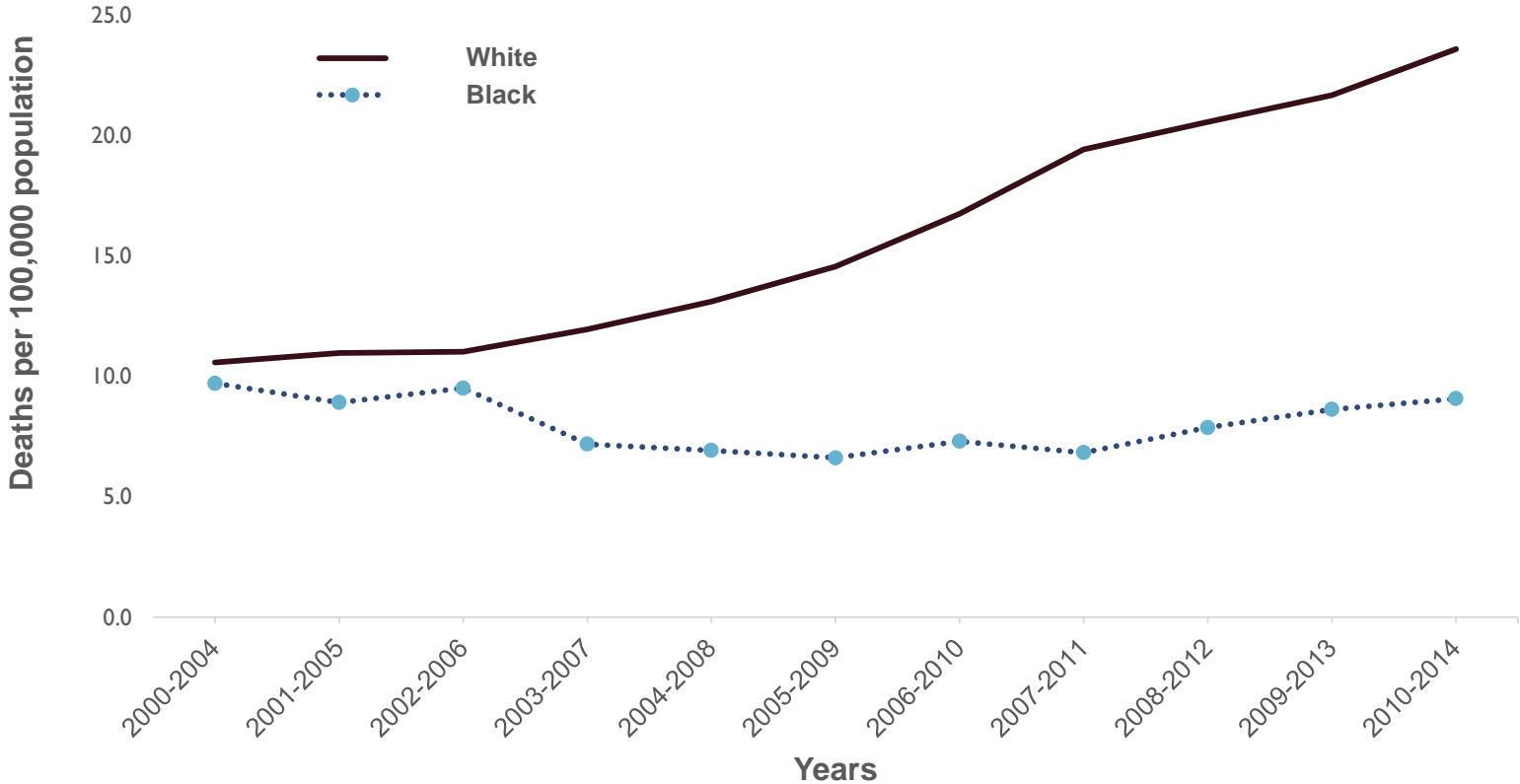
Five-year Age-adjusted Hypertension Mortality Rates by Race Delaware 2000-2014



Five-year Age-adjusted Diabetes Mortality Rates by Race Delaware 2000-2014

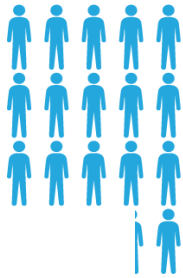


Five-year Age Adjusted Drug-Induced Mortality Rates by Race Delaware 2000-2014



YOUNG MEN KILLED BY GUNS

(RATE PER 100,000 INHABITANTS)



16.22
WHITE YOUNG
MEN, 15-24

73.21
BLACK YOUNG
MEN, 15-24



Disproportionate Violence Among Young Black Men, 15-24 yo

- Wilmington is the #4 most violent city in the US
- This year is trending high
- More Millennials died from gun violence than substance abuse, suicides and accidents than any other cause except motor vehicle accidents
- Each death has two lives changed forever
- Incarcerating a 20-year-old for life may cost up to \$2M



Health Equity Guide for Public Health Practitioners and Partners



June 2015

Prepared for the Delaware Division
of Public Health



101 Lancaster and the Parkway Building, 201 North 20th
Street, Delaware, Delaware



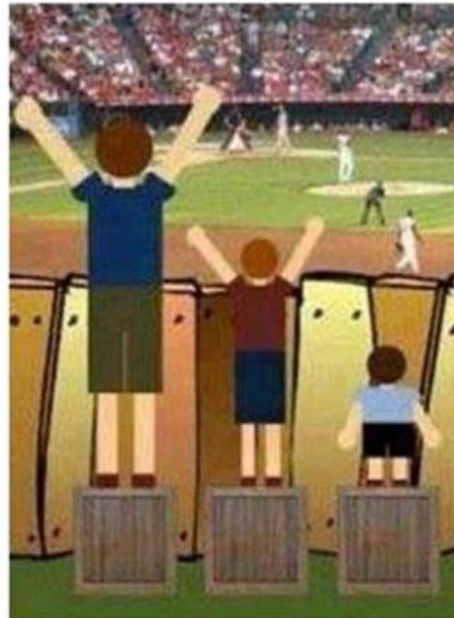
Division of Public Health
& Administration

TSPHA

“Public health is what we, as a society, do collectively to assure the conditions in which (all) people can be healthy.”

-Institute of Medicine (1988), *Future of Public Health*

Equality



Equity

